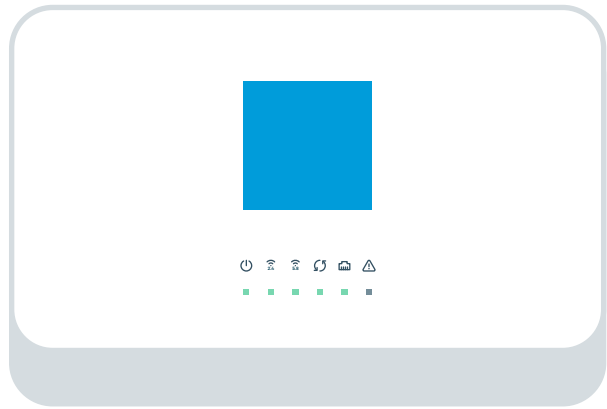




# What's in the Box

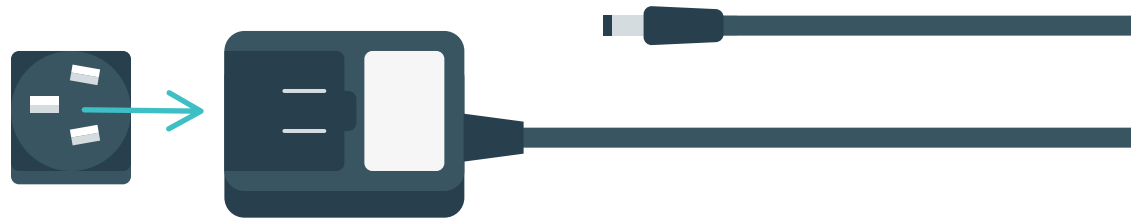
If any of these items are missing, please contact [community@samknows.com](mailto:community@samknows.com).



SamKnows **Whitebox**



**Power supply** (plug requires assembly)

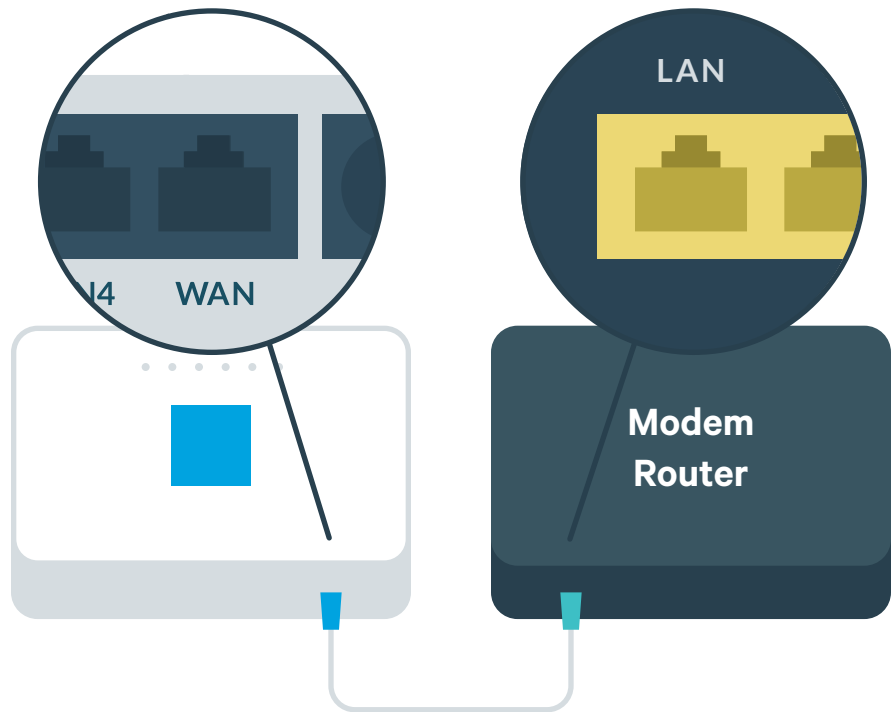


## 1a. Connect

### If you have a combined modem / router

Plug one end of the **ethernet cable** into the port marked '**WAN**' on the back of the Whitebox.

Connect the other end of the ethernet cable into a spare '**LAN**' port on your combined modem / router.



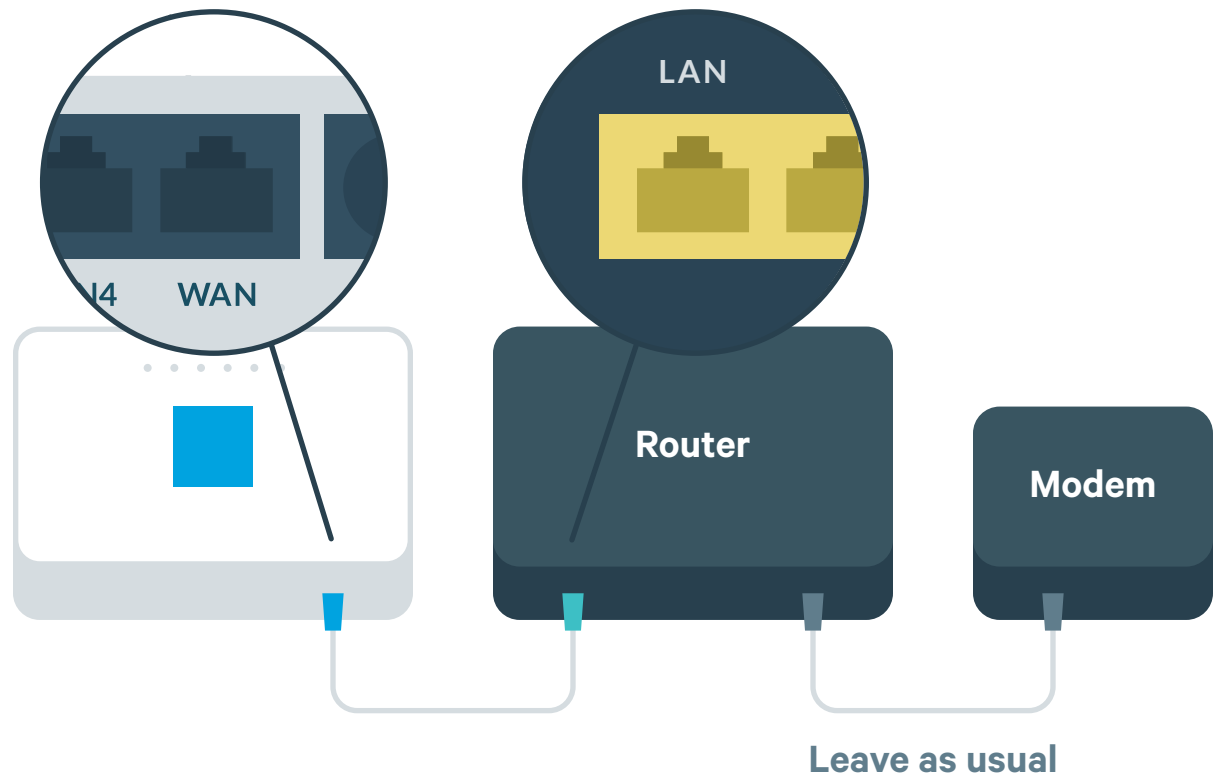
## 1b. Connect

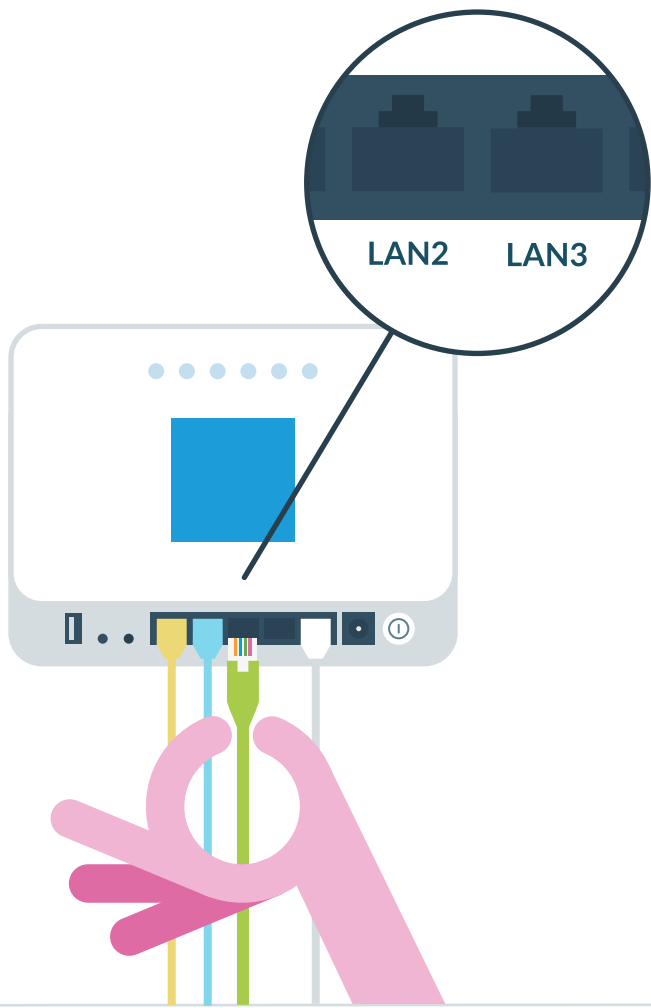
### If you have a separate modem and router

Plug in the Whitebox as above.

Connect the other end of the ethernet cable into a spare '**LAN**' port on your router.

Keep your modem connected to your separate router as usual.






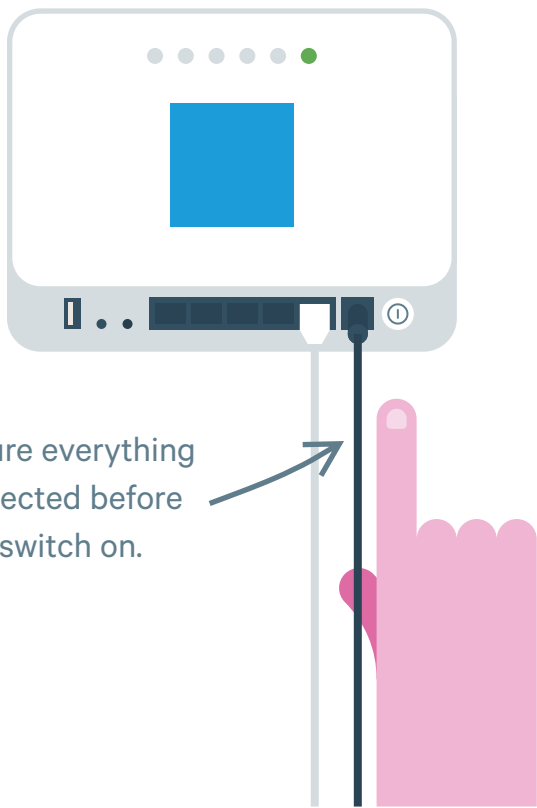
## 2. Plug in wired devices

If you have other wired devices (e.g. desktop computer) occupying the ‘**LAN1 to LAN4**’ ports on your router, move them to the ‘**LAN**’ ports on your Whitebox.

## 3. Power up

Connect the **power supply** to your Whitebox. Switch on at the mains socket, then press the button on the back marked ‘**ON/OFF**’.

When the light below the  icon remains steady the Whitebox is fully set up.



## 4. Log in

Your Whitebox is now ready to start testing your internet performance.

You’ll be able to see the test results from your Whitebox on the **SamKnows One** dashboard. You will also receive an email telling you your Whitebox has been connected. Test results will start to populate your dashboard after 48 hours.

If you can’t login to your SamKnows One dashboard, visit [support.samknows.one](https://support.samknows.one).

